



Royal Export & Import Inc



[www.royalexportimportcenter.com](http://www.royalexportimportcenter.com)

## Meat Division



Place of Origin: Brazil

Breeding and Fattening: Nelore, Zebu

Meat does not receive salting.

Frozen product

Certifications: S.I.F Brazil

Part: Frozen Cuts Beef 2-way, 4 – way, parts carcass

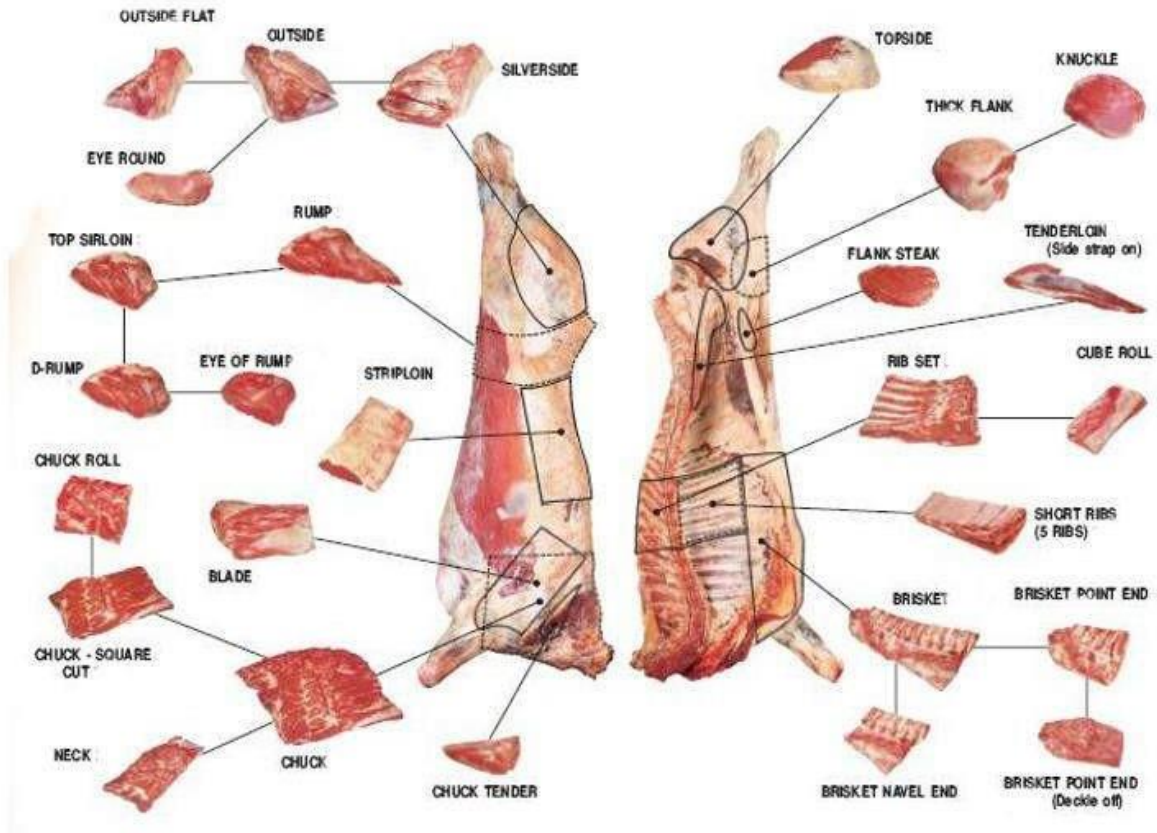


Royal Export & Import Inc



www.royalexportimportcenter.com

## BEEF CUTS



- Silver Side
- Thick Flank
- Top Side
- Shin Shank
- Fore Quarter Rolls
- Thick Flank
- Joins
- Rump Steak
- Strip Loin
- Thick Flank

- Blade
- Chest
- Mandrel
- Neck
- Heart
- Liver
- Kidney
- Tongue
- Tail
- Cheek meat

- Hind Quarter Cuts (Topside, Silver-side, Knuckle and Rump-steak)
- Previous quarter
- Chuck Tender
- Cubes
- Slices
- Cut
- Cube Roll
- Tenderloin



Royal Export & Import Inc



www.royalexportimportcenter.com

**Chuck/ Neck**

Sometimes known as needle, is a type of beef cut, from the back of the beef and located on the front of the animal and represents 21.72% of the front carcass. It is the largest and softest cut of the animal's forehead. It is relatively thin and not very fibrous.



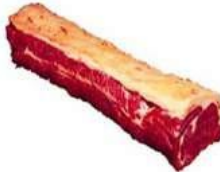
**Rump / D-Rump / Top Sirloin**

The whole rump or rump with mamma or rump without steak, is a type of beef cut. It is located at the rear of the animal between the loin and the thigh and represents approximately 11.23% of the rear carcass.



**Sirloin**

This is the longest cut of beef. It is located at the rear of the animal and represents approximately 10.83% of the rear carcass, also known as fillet of sirloin.



**Ribs**

The Ribs is a type of beef cut surrounded by bone and fat and is located on the front, representing approximately 3.90% of the rear carcass.



**Silverside / Outside flat**

It is a type of beef cut and is located on the rear of the animal and represents approximately 9.63% of the rear carcass.



**Topside**

Is a type of beef cut and is located on the rear of the animal and represents approximately 13.64% of the rear carcass.



**Ox-Hump**

It is a type of beef cut existing in the hump of the ox and is located in the front of the animal, more precisely behind the neck, and represents 2.34% of the front carcass.



**Flank Steak**

The flank steak is a traditionally Brazilian cut, and is close to the cut called empty steak, or empty, it is a type of beef cut and is located between the back and the rib on the sides of the animal and representing, approximately, 1.52% of the rear housing.



**Eye Round**

Located at the rear of the animal and represents approximately 5.62% of the rear carcass.



**Sirloin Tri Tip Roast**

Located at the rear of the animal, approximately 4.21% of the rear carcass.





Royal Export & Import Inc



www.royalexportimportcenter.com

**Shin**

The Shin can be from the front, rear or other muscles along with other cuts, it is a type of beef cut that is located on the front and rear of the animal and represents 6.49% of the front carcass and 7.22% of the rear housing.



**Blade**

It is a type of beef cut and is located on the front of the animal (more specifically on the front legs) and represents 17.23% of the front carcass



**Knuckle**

Type of beef cut and is located at the bottom of the animal and represents approximately 9.83% of the rear carcass.



**Brisket**

Is a type of beef cut and is located on the front of the animal which represents 13.73% of the front carcass.



**Chuck Tender**

Is Type of beef cut and is located on the front of the animal (more specifically on the arm) which represents 5.01% of the front carcass and with meat is tender.



**Top Sirloin Cap**

Picanha is a type of beef cut typically Brazilian. The most tender and tasty part is the end end and is no more than 25 centimeters long and the weight does not exceed 2 kg, it is about 0.01% of the rear carcass.



**Neck**

The Neck is a type of beef cut and is located on the front of the animal, which represents 14.73% of the front carcass.



**Short Ribs**

Is a specific part of the beef cut rib. It is located between the rear and the front of the animal, representing approximately 1.03% of the rear carcass.



**Ox Tail**

Is a type of beef cut and is located at the rear of the animal and represents 0.01% of the rear carcass.



**Offal**

stomach; tongue; kidneys



**Calf's foot Jelly**





Royal Export & Import Inc



www.royalexportimportcenter.com

**ALL INTERNATIONAL ADMINISTRATION & EXPORT MANAGEMENT BY:  
WELL EXPORT GROUP CORP.**

## GENERAL ADMINISTRATION



**INTERNATIONAL & CANADA MAILING & MEETING ADDRESS:**  
ROYAL EXPORT & IMPORT CENTER GROUP  
JOSEPH EDWARDS BUSINESS CENTER CORP  
Address: 4145 North Service Road, Suite 200  
Burlington, On, L7L6A3 – Canada

**U.S.A. MAILING ADDRESS**  
JOSEPH EDWARDS – ROYAL EXPORT GROUP  
P.O. BOX 15135 – CLEARWATER – FLORIDA (USA) 33.766

**NETWORK CUSTOMERS SERVICES BY:**  
International Trade & Export Management  
[jedwards@royalexportimportcenter.com](mailto:jedwards@royalexportimportcenter.com)

## SALES ADMINISTRATIVE PARTNERS



**INTERNATIONAL TRADE & EXPORT MANAGEMENT**