



## WOODEN HOMES CITY - BEACH – COUNTRYSIDE PONDEROSA MODELS

***The lumber*** we use guarantee thermal, acoustic comfort, durability and protection for our homes. The way we build is based on traditional carpentry techniques, so buildings must be strong and highly secure.

***The woods used are noble***, and always in solid form. The fitting system, without the use of staples or nails, guarantees total sealing, in addition to structural security and strength, also guaranteed by the thickness of the solid wood planks that make up the walls: (4.5 cm or 3.5 cm thick) or the use of double wall, which was developed essentially for the northern European countries, in a total of 10 cm.

***The geometric design of our components has been studied in order to guarantee quality, durability and the best performance throughout the life of the house.***

The use of male / female fittings has been changed in order to obtain a wall that is about 50% more solid than some similar constructions.

***The greater depth of the fittings***, although requiring a greater amount of wood, makes the joints, in addition to being more resistant, more watertight, thus eliminating the appearance of cracks, warps or kinks that could compromise the house.

The solid wall construction system using Brazilian hardwood has the following advantages over traditional construction:

1. Construction speed.
2. Controlled costs.
3. Use of noble wood, providing comfort and natural beauty
4. Seismic resistance.
5. *Low cost of air conditioning.*
6. Low cost of exterior maintenance.
7. Longer construction life.

The comfort and quality of life provided by a wooden house result from the various benefits that this type of structure has:



**Models Wooden Homes Tropical**  
**Ranch models**



Monte Verde - 91m<sup>2</sup> / 979.51 sqf



Sao Bernardo - 100m<sup>2</sup> / 1076.39sqf



Empress - 102m<sup>2</sup> / 1097.91 sqf



Itapema - 120m<sup>2</sup> / 1291.66 sqf



Natal - 135m<sup>2</sup> / 1453.12 sqf



Alcântara - 162m<sup>2</sup> / 1743.75 sqf



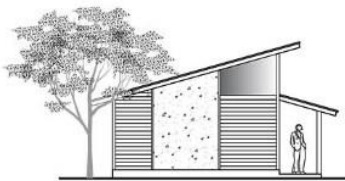
Cuiabá - 238m<sup>2</sup> / 2561.81 sqf



Ubatuba - 320m<sup>2</sup> / 3444.45 sqf



## Studio Models



Miró Studio - 29m<sup>2</sup> / 312.15 sqf



Studio Home / Office - 30m<sup>2</sup> / 322.91 sqf



Olinda Studio - 40m<sup>2</sup> / 430.55 sqf

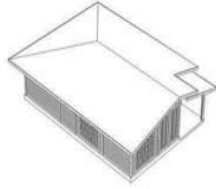
## FAMILY ESTATES



## BEACH & CITY MODELS



Chagall - 53m<sup>2</sup> / 570.48 sqf



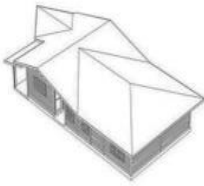
Cézanne - 70m<sup>2</sup> / 753.47 sqf



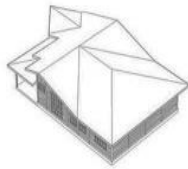
Mondrian - 77m<sup>2</sup> / 828.82 sqf



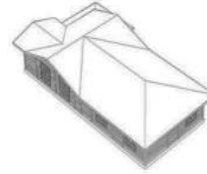
Renoir - 84m<sup>2</sup> / 904.16 sqf



Portinari - 101m<sup>2</sup> / 1087.15 sqf



Rossetti - 125m<sup>2</sup> / 1345.48 sqf



Di Cavalcanti - 154m<sup>2</sup> / 1657.64 sqf



Michelangelo - 220m<sup>2</sup> / 2368.06 sqf



Matisse - 84m<sup>2</sup> / 904.16 sqf



Modigliani - 93m<sup>2</sup> / 1001.04 sqf



Rousseau - 97m<sup>2</sup> / 1,044.10sqf



Da Vinci - 100m<sup>2</sup> / 1076.39 sqf



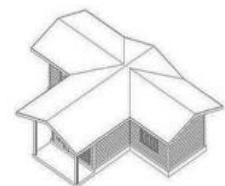
Dalí - 26m<sup>2</sup> / 279.86 sqf



Goya - 26m<sup>2</sup> / 279.86 sqf



Miró - 29m<sup>2</sup> / 312.15 sqf



Monet - 46m<sup>2</sup> / 495.14 sqf



## **SALES & DEVELOPMENT**

### **GLOBAL CONTACT CENTER WITHOUT CHARGES**

**International Contact Support Center by**

**International Trade and Exhibit & Export Management ITEM – Canada.**

All calls from any area will be directed to our contact center in Canada without any charges for the caller.

You can always send us an email or fill the contact meetings information and quotations as you prefer.

**ROYAL EXPORT & IMPORT CENTER GROUP  
JOSEPH EDWARDS BUSINESS CENTER CORP**

Address: 4145 North Service Road, Suite 200  
Burlington, On, L7L6A3 – Canada

U.S.A. MAILING ADDRESS

**WELL EXPORT GROUP CORP.**

**JOSEPH EDWARDS – ROYAL EXPORT GROUP**

P.O. BOX 15135 – CLEARWATER – FLORIDA (USA)) 33766

NETWORK CUSTOMER SERVICES BY:

International Trade & Export Management

[jedwards@royalexportimportcenter.com](mailto:jedwards@royalexportimportcenter.com)

Talk to us via Skype: **item.ca**

#### **IMPORTANT NOTICE**

Due to the Covid 19 pandemic, we are not scheduling office meetings.

Please feel free to call using our international numbers or by Skype at **ITEM.CA**

#### **INTERNATIONAL PHONE NUMBERS**

##### **ARGENTINA**

Buenos Aires: +54 11 5984-2531

##### **BRAZIL**

Brasilia: +55-61-35500755

Curitiba: +55 41 40636105

Florianópolis: +55 48 40420530

Fortaleza: +55 85 40420515

Londrina: +55 43 -30159018

São Paulo: +55 11 4063-4964

Porto Velho: +55 69 40629370

##### **CANADA**

Montreal: +1 (514) 907 6966

Toronto: +1 (647) 361 6165

Vancouver: +1 (778) 650 4077



**HONG KONG – SAR**

852-5808-8733

**ISRAEL**

972-43720007 Administration

**PORTUGAL – LISBON:** 351-30880-1030

Extension 632953 Administration

Extension 630405 Export/Import

**USA**

Chicago – Illinois: 1-312-642-5007

Clearwater: 1-727-216-8055

Houston – Texas: 1-713-300-8955

Miami: 1-305-602-0023

New York: 1-347-602-4480

Los Angeles: 1-310-626-992071

ALL INCOMING AND OUTGOING CALLS WILL BE UNDER  
ADMINISTRATION OF  
I.T.E.M – INTERNATIONAL TRADE AND EXHIBIT & EXPORT MANAGEMENT  
NETWORK MANAGEMENT FOR WELL EXPORT GROUP CORP  
ROYAL EXPORT & IMPORT CENTER, INC, AND SUBSIDIARIES.  
INCOMING CALLS WILL BE FORWARDED TO OUR CALL CENTER  
WITHOUT COSTS.

**NOTICE: WE ARE OPENING BUSINESS AND WILL ACCEPT PROPOSAL  
FROM HOME CONSTRUCTION COMPANIES AND ESTATES  
DEVELOPMENT IN USA, CANADA, ISRAEL AND OTHER COUNTRIES  
LOCATED IN THE MIDDLE EAST & CARRIBEAN COUNTRIES.**

**Disclaimer: Well Export Group Corp and Associates** are not a Canadian or United States Securities Dealer, Broker or US Investment Advisor. This and or attached documents are not to be considered a solicitation for any purpose in any form or content, nor an offer to sell and/or buy securities.